



Priory Road NW6

Parkheath
Sold on Service





Priory Road, NW6

£750,000

Leasehold

- Bright and spacious, lateral two bedroom apartment
- Set within a small private purpose built block
- Third floor (top floor) with lift access
- Recently refurbished to a high standard
- Generously sized L-shape reception/dining room with access to a private balcony
- Two modern bathrooms
- Large principle bedroom with fitted wardrobes
- Ideally located for West Hampstead and Finchley Road's transport links (Jubilee and Metropolitan line, Overground and Thameslink) and amenities
- Chain free
- EPC: Rating C, Council Tax: Camden band D

Belsize Park/Hampstead
208 Haverstock Hill
NW3 2AG
Sales 020 7431 1234
Lettings 020 7431 3104
nw3@parkheath.com

South/West Hampstead
192 West End Lane
NW6 1SG
Sales & Lettings
Tel 020 7794 7111
192@parkheath.com

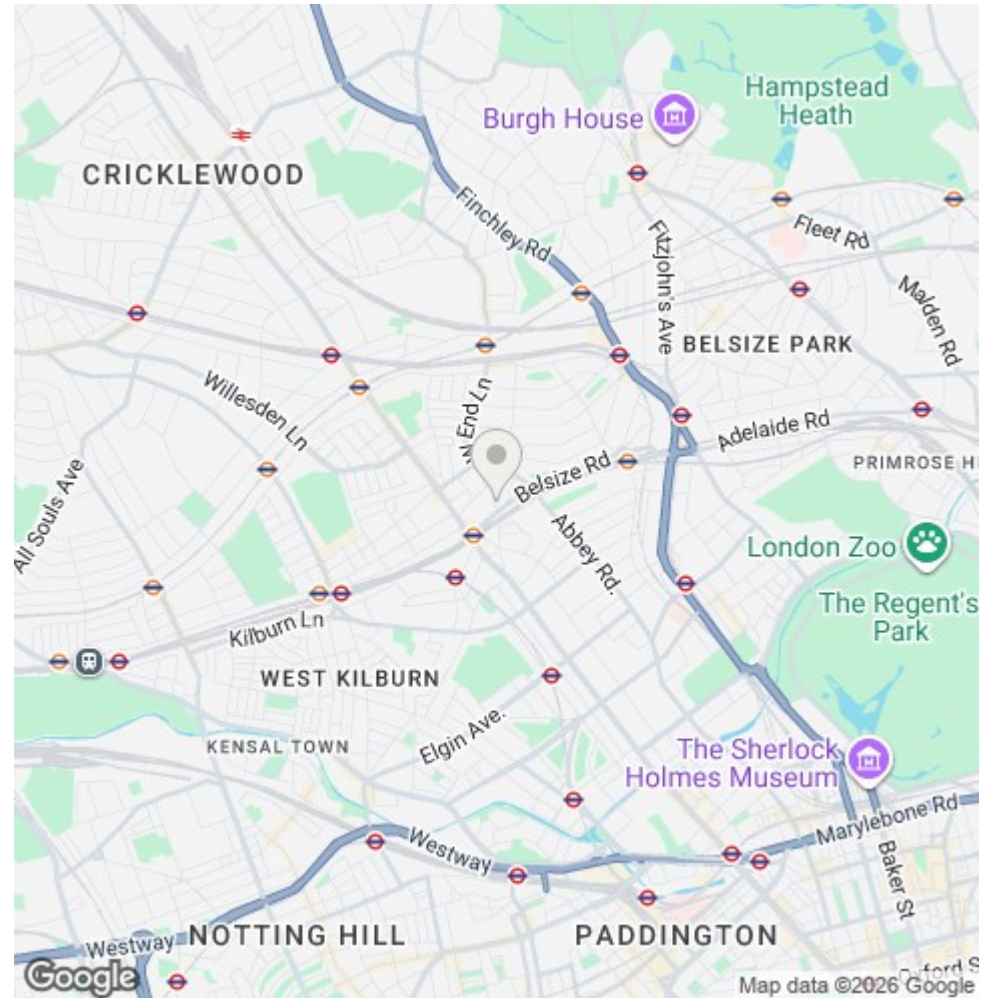
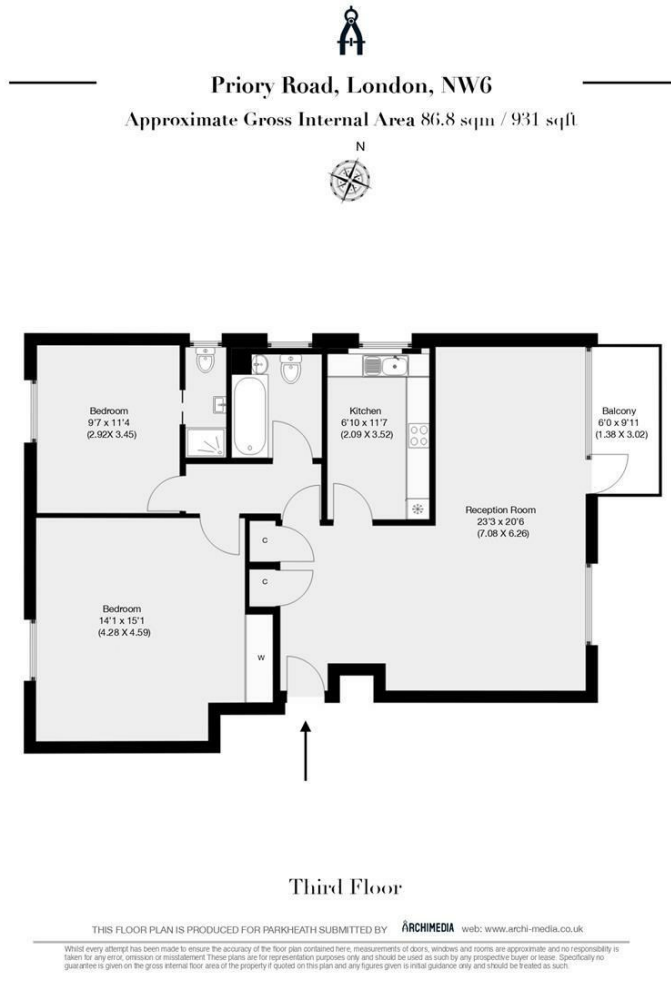
Kensal Rise
54-56 Chamberlayne Rd
NW10 3JH
Tel 020 8960 4845
kensal@parkheath.com

Property Management
192 West End Lane
NW6 1SG
020 7433 6174
pm@parkheath.com

Parkheath
Sold on Service

Camden Tax band D

www.parkheath.com



The particulars do not constitute part of an offer or contract. The particulars, including text, photographs and plans, are for the guidance only of prospective purchasers/tenants and must not be relied upon as statements of fact. The descriptions provided therein represent the opinion of the author and whilst given in good faith should not be construed as statements of fact. Nothing in these particulars shall be deemed a statement that the property is in good condition or otherwise or that any services or facilities are in good working order. All measurements are approximate